



COMMERCIAL SPACE AVAILABLE FOR LEASE **MARKET PLACE SHOPPING CENTER**

11121 N. RODNEY PARHAM ROAD
LITTLE ROCK, AR 72211

SUITE 32B - 3,200 SQFT +/-

Neighborhood shopping center anchored by Starbucks,
Community Bakery, Homer's and Sauce(d).

PRESENTED BY:

George Petrov
501.413.3664
george@P4realtygroup.com



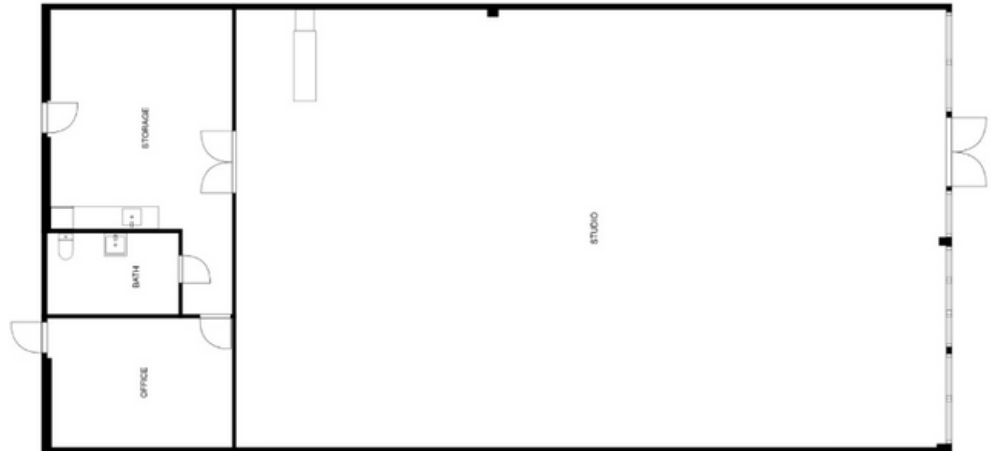
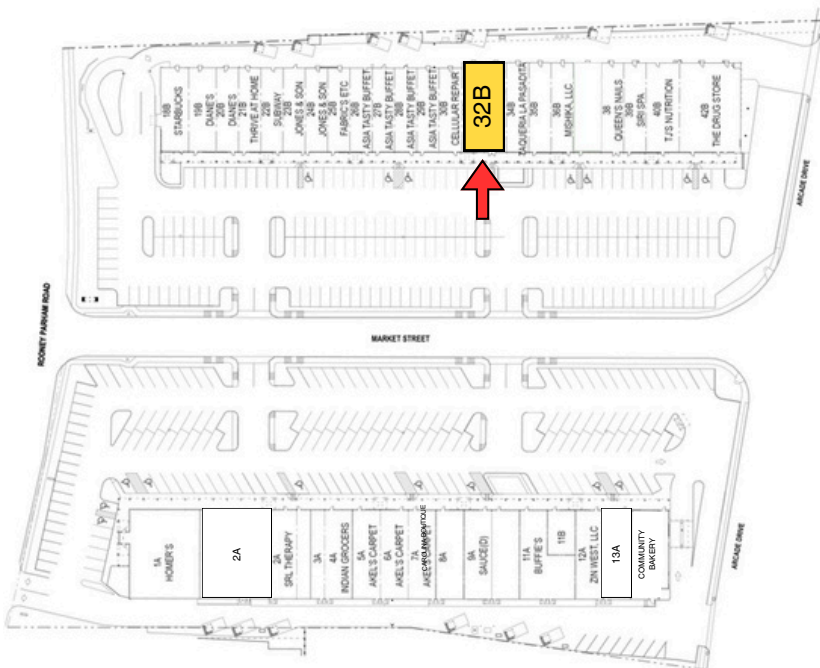
MARKET PLACE SHOPPING CENTER 11121 N. RODNEY PARHAM ROAD, LITTLE ROCK, AR 72211



Suite 32B - \$20.50 / SQ. FT, NNN Lease
Estimated CAM - \$5.00 / SQ. FT.

SUMMARY

- Versatile open floor plan with ample storage
- Neighborhood shopping center anchored by Starbucks, Homer's and Sauce(d)
- Excellent location with high visibility and foot traffic
- Digital, Pylon & Tenant signage available
- 4:1 parking ratio
- Close proximity to I-430 and I-630



Suite 32B - 3,200Sq.Ft. +/-

George Petrov
501.413.3664
george@P4realtygroup.com