



COMMERCIAL SPACE AVAILABLE FOR LEASE

MARKET PLACE SHOPPING CENTER

11121 N. RODNEY PARHAM ROAD
LITTLE ROCK, AR 72211

SUITE 5A - 6,000 SQFT +/-

PROPERTY HIGHLIGHTS :

- Neighborhood shopping center anchored by Starbucks, Homer's, Community Bakery and Sauce(d).
- Digital, Pylon & Tenant signage available.
- 4:1 parking ratio
- Prime location with visibility from Rodney Parham Road, next to Homer's.
- 37,000 Vehicles Per Day



PRESENTED BY:

George Petrov
501.413.3664
george@P4realtygroup.com



MARKET PLACE SHOPPING CENTER

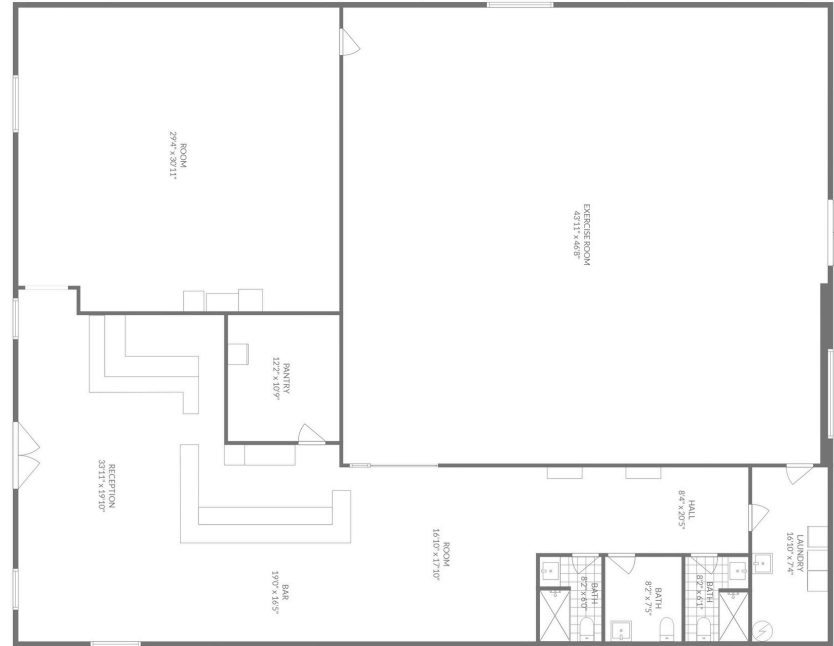
Suite 5A - \$20.50 / SQ. FT, NNN Lease
 Estimated CAM - \$5.00 / SQ. FT.

11121 N. RODNEY PARHAM ROAD, LITTLE ROCK, AR 72211

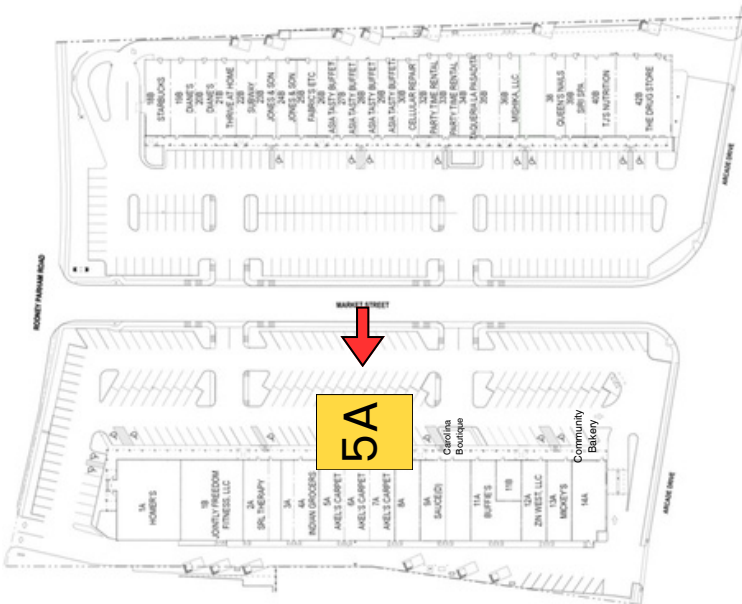


SUMMARY:

- Versatile open floor plan with ample storage.
- Space is capable of being subdivided for various business uses and needs.
- Neighborhood shopping center anchored by Starbucks, Homer's, Community Bakery and Sauce(d).
- Digital, Pylon & Tenant signage available.
- 4:1 parking ratio
- Prime location with visibility from Rodney Parham Road, next to Homer's.
- 37,000 Vehicles Per Day



Suite 5A
 6,000 SF



George Petrov
 501.413.3664
 george@P4realtygroup.com